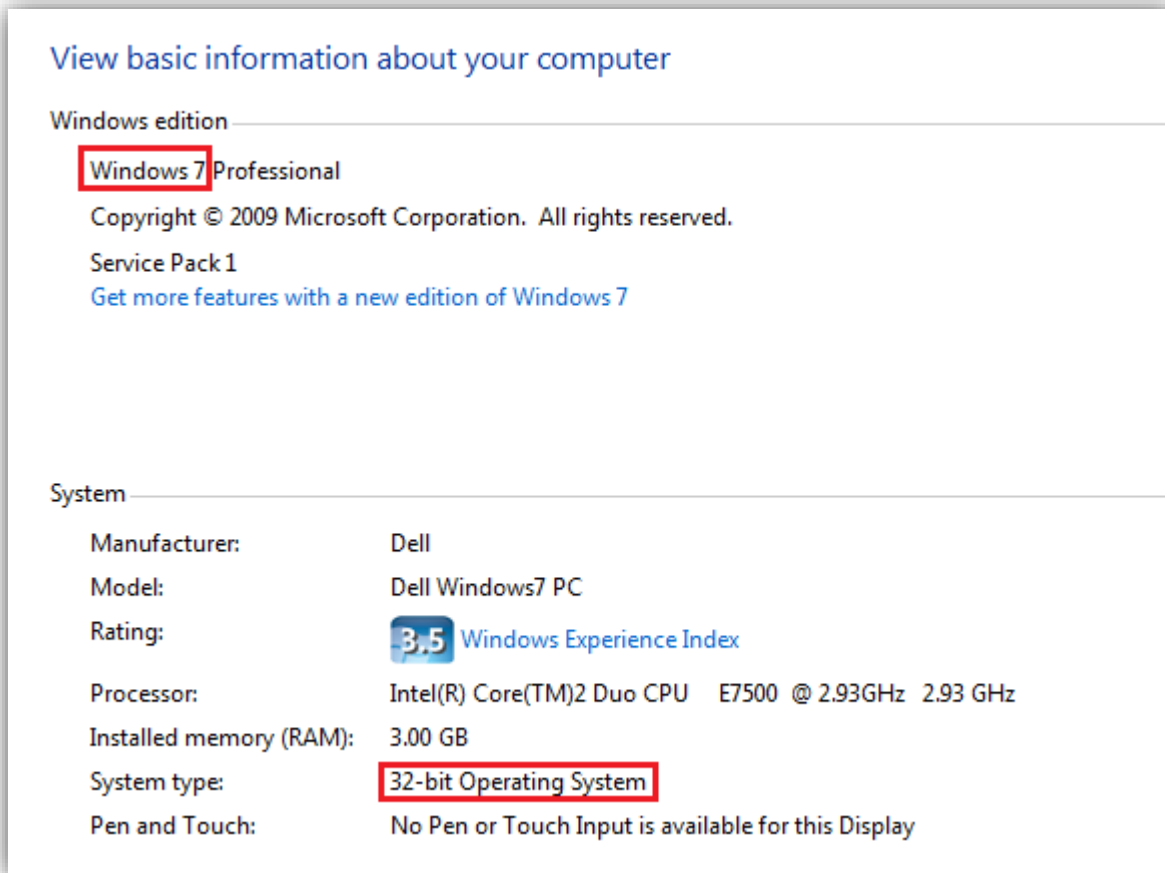


Introduction

USB driver installation is **required** for a direct USB connection. Drivers are included in your flash drive from purchase or available for download on our website at www.davidlinkusa.com in the support & downloads section.

Please ensure that you are downloading the correct drivers for your operating system.



The screenshot shows the 'View basic information about your computer' window in Windows. It is divided into two sections: 'Windows edition' and 'System'. In the 'Windows edition' section, 'Windows 7 Professional' is highlighted with a red box. Below it, the copyright information and service pack are listed. In the 'System' section, a table of hardware and software details is shown. The 'System type' entry is highlighted with a red box, indicating '32-bit Operating System'.

Windows edition	
Windows edition	Windows 7 Professional
	Copyright © 2009 Microsoft Corporation. All rights reserved.
	Service Pack 1
	Get more features with a new edition of Windows 7

System	
Manufacturer:	Dell
Model:	Dell Windows7 PC
Rating:	3.5 Windows Experience Index
Processor:	Intel(R) Core(TM)2 Duo CPU E7500 @ 2.93GHz 2.93 GHz
Installed memory (RAM):	3.00 GB
System type:	32-bit Operating System
Pen and Touch:	No Pen or Touch Input is available for this Display

Windows 8

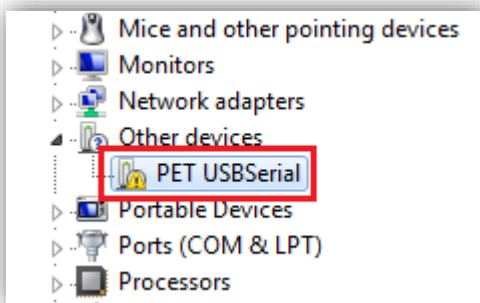
If you are running Windows 8, there will be additional steps, refer to this page prior to installing drivers: <http://www.davidlinkusa.com/SearchResults.asp?Cat=88>

USB Driver Download & Installation

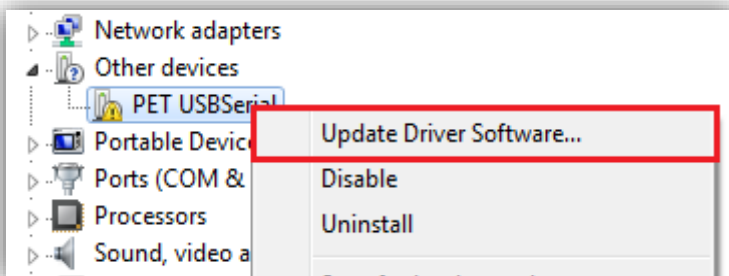
Installation

Once drivers are downloaded and unzipped they will need to be installed.

1. Connect the USB serial cord from your computer to the device.
2. Locate “Device Manager” on your computer (found in system options or searched).
3. Locate “PET USBSerial”

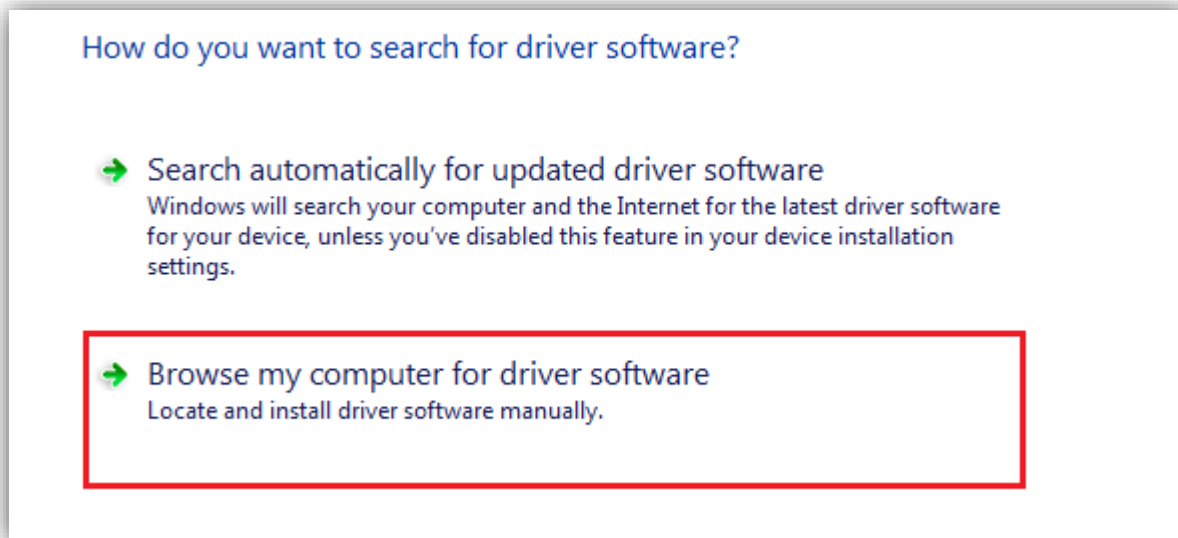


4. Right click and select “Update driver software...”.

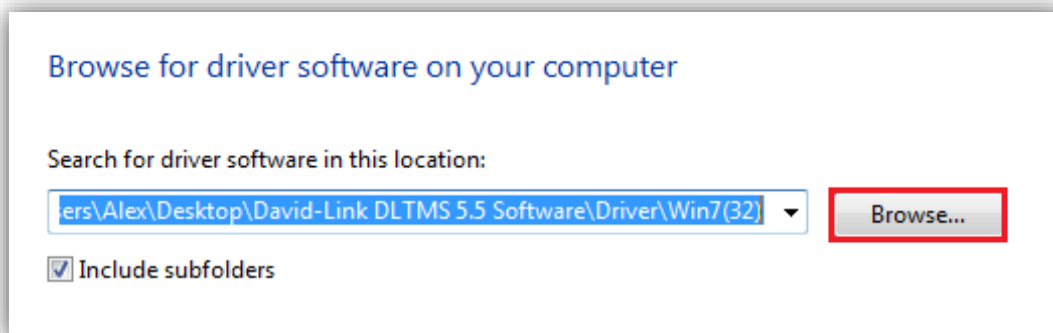


USB Driver Download & Installation

5. Select "Browse my computer for driver software".



6. Select "Browse" and navigate to the location of your unzipped drivers and hit next.



7. Select "Install this software driver anyway".



8. Drivers should now be installed.

